



4<sup>th</sup> ANNUAL  
COMPANY NEWSLETTER

VOL. 4 --- ISSUE 1

**JANUARY 2011**

**EXPERIENCE. QUALITY. RELIABILITY.**

[www.wheelerelectric.com](http://www.wheelerelectric.com)

### ***NOTE FROM THE PRESIDENT***

Some time ago, I set a goal to always be reading a 'classic' book. I recently finished Charles Dicken's masterpiece, "A Tale of Two Cities". The first line of the book, I believe, is applicable to our current situation. "It was the best of times, it was the worst of times..." certainly describes our day. We have great concern for the lack of work, but hope for better things in the spring. We have been blessed to find sufficient projects to keep each of you employed and we are extremely grateful for your efforts and patience through these trying and uncertain times.

*~ Doug Wheeler*

Remember that Wheeler Electric is working with local power companies to install high efficiency lighting in as many businesses as we can. Encourage your associates to contact us for a **free** energy efficiency lighting review!

### ***REFERRAL CONTEST***

#### ***Commercial and Residential***

During 2011, join in our contest for employees to win big!

Please encourage family/friends/business associates to contact Wheeler Electric for any electrical work – large or small. And if they give us your name as the referral, you will be eligible to win a prize, drawing to be held quarterly. Prizes may include: gift certificates to local restaurants or stores, gifts from local businesses or other fun electronic gadgets.

For more details, contact Josh or Jennifer in the office!

Let the contest begin! ☺

### ***COMPANY RECOGNITION***

Wheeler Electric is elated to have been ranked in ENR's top 600 specialty contractors in 2010. As one of the industry's premier sources for news and analysis, ENR is an important influence on construction trends and information.

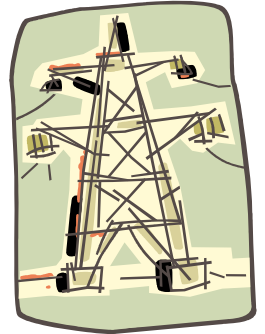
The ENR Top 600 list does a great job of highlighting some of the fine contractors throughout the nation. (The links to ENR lists can be found at: <http://enr.construction.com/toplists/default.asp>)

Wheeler Electric has been especially fortunate to have a strong team of managers and electricians raise our performance to this level of recognition. It is the company's firm hope that such accolades will continue to highlight the caliber of contractor available to all of the fine owners and architects working in southeast Idaho and the intermountain west. Wheeler Electric looks forward to a future where we can continue to excel and grow with assistance from great industry allies such as ENR.

## HIGHLIGHTS FROM ACCOUNTING

**\*2011\***

The office staff took on a major upgrade to our Construction and Accounting software program at the end of 2010. We are now using Dexter + Chaney's software, called Spectrum. This change was long over-due, since Wheeler Electric has been fortunate enough to feel some growing pains over the last ten years or so, since our last software change. The office staff is still learning about all of the new, groovy improvements available, but we're looking forward to smooth sailings in 2011 and beyond.



*Small opportunities are often the beginning of great enterprises. ~ Anonymous*

A picture of the powerful transformer some of our guys worked on located on an animal preserve ~ worth **hundreds**.



A picture of our guys working in even more dangerous conditions than electrical ~ worth **thousands**.



The look on Richard Byington's face, after a buffalo just stepped right over the barricade and onto our conduit ~ **PRICELESS!**



## DEDICATED TO EXCELLENCE ~ A TEAM EFFORT

The year 2010 brought many changes to the construction industry. The private commercial work has nearly come to a stop! The number of projects bidding is considerably down. Currently most of the work bidding is government work with money from the ARRA (American Recovery and Reinvestment Act). Contractors are bidding work all over the United States in an effort to stay busy. We have had plenty of them come into our area too!

One important point about this lack of work is the fact that for us and all others to get the work, our mark-ups have been reduced to a very minimum. For us this means that we must make adjustments in the office and in the field, in an effort to keep all of our projects on a positive outcome! While nobody likes changes and especially those that make us tighten our belts, we all must make some kind of adjustments, from doing the same old things. We have to be smarter and think things through better. We must not get caught doing things twice, or taking an extended break or lunch, or driving to the supply house for things that we should have picked up the first trip there!

We can be successful during these difficult times, however we all must pull together to make it happen. It will take all of us doing our best to make it work!

Happy New Year! ~ *Jeff Wheeler*

## ***NEW TO THE CLUB***

New additions to our list of employees with 10 years or more of uninterrupted service at the end of 2010:

- Jeff Jaggar
- Dave Hammond
- Fred Bunce
- Brian Skorcz

**THANKS FOR ALL YOU DO!**

### ***2011 Holidays – Office closed:***

- ★ May 30<sup>th</sup>
- ★ July 4<sup>th</sup>
- ★ Sept. 5<sup>th</sup>
- ★ Nov. 24<sup>th</sup> and Nov. 25<sup>th</sup>
- ★ Dec. 26<sup>th</sup>
- ☼ Union Holiday – Nov. 11<sup>th</sup>

MCHUMOR.COM by T. McCracken



Call before you dig!

## ***MAJOR PROJECT HIGHLIGHT***

We have had many great projects in 2010. Each of these projects brought many challenges and successes. Many projects required being away from home, again, and many hours were spent making all of these projects successful and for that we are grateful to all of those who have been involved. Some of these projects include: new construction for the Madison High School in Rexburg, the BYU-I Manwaring Center expansion in Rexburg, Lemolo II Hydro Power Plant rebuild in Lemolo, Oregon and several at the INL.

This year, we have chosen to highlight the **MADISON MEMORIAL HOSPITAL EXPANSION**. This project was bid in December of 2005. This job started out to be a \$3.7 million job that was scheduled to be done in just under 3 years. Add another year and a half and \$1.6 million worth of extra work and Madison Memorial Hospital was completed in 2010.

This job was no easy task to complete. Our crew had to be very careful to keep the old hospital up and running, with no glitches with regards to Life Safety Systems as well as Life Support Systems. Dennis Sucher added some gray hairs during this time. Dennis was the superintendent and Drew Adams was a foreman. Together they supervised 20 plus electricians. Dennis said “this was an excellent crew and did a fantastic job.” Some of the things that stand out on this job were the following: A) Installing a 1 MW generator with multiple transfer switches. B) Security systems that used cameras as well as card readers for access. C) A fire alarm system that had to be installed and working throughout the duration. Try to keep that clean and operating during construction! D) Miles and miles of conduit and wire. Not to mention lights and devices. And, E) The layout of the electrical rooms are something they should be very proud of. Exposed conduit work looks really good!

Quick note about Dennis - He once again put so much of himself into this job that when it was time to leave, I had to use a D9 Cat to pull him off of it.

~ Shane Monson, Project Manager

## ***APPRECIATION FEATURE***

In true Wheeler Electric craftsmen tradition, *we received raving reviews* for Jake Norman & his crew that worked on installing a transformer and resolving other power issues at a ranch in Spencer, Idaho, this past summer. A big THANK YOU to Jake, Camron Wakefield, Donovan Norman, Casey Norman, along with Kelly Norman, Project Manager.

Thank you for the opportunity to serve you! We're here for any Industrial, Commercial,  
Residential, Design, Engineering, Installation, or Network cabling needs!

---

Published by:

**Wheeler Electric, Inc.**  
**P.O. Box 2173**  
**Idaho Falls, ID 83403-2173**  
**PH: 208-522-1906**

No postage  
necessary  
unless mailed.

---